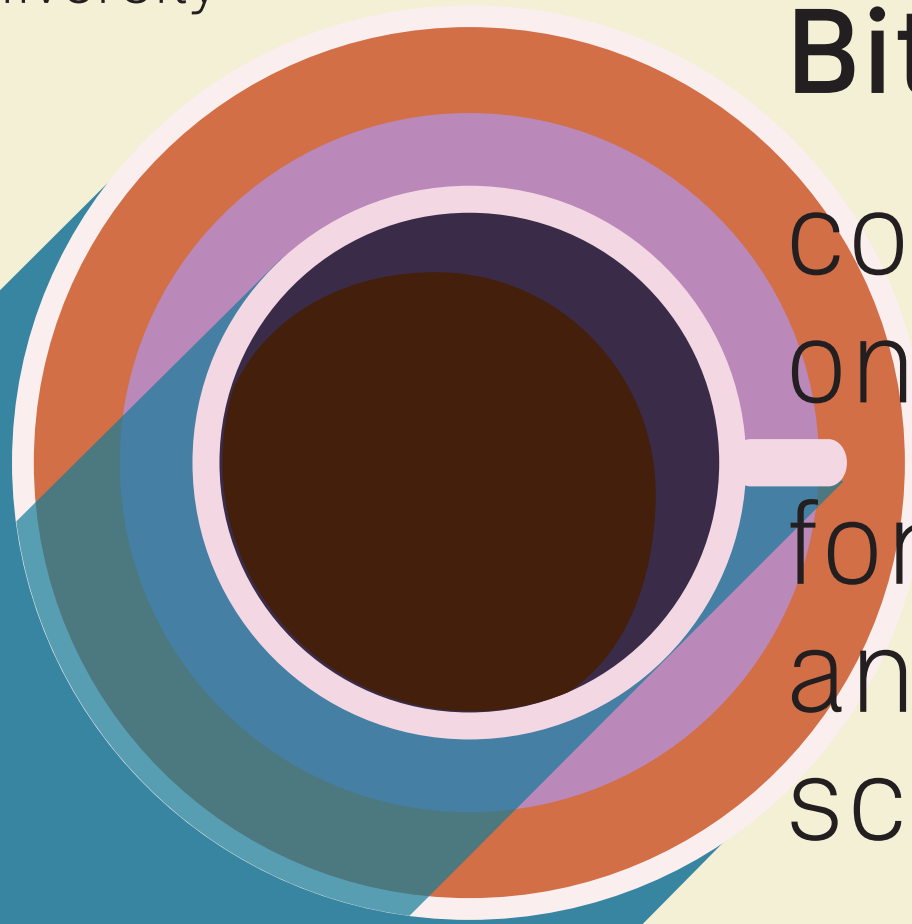


Your Coffee Lecture
Baristas at the University
Library Bern

Medical and Science
Libraries Research
Support Team

Open Science
Team



Coffee & Bit(e)s

coffee lectures
on demand
for natural
and medical
scientists



<http://bib.unibe.ch/scimed>
October 2024

u^b

b
**UNIVERSITÄT
BERN**

Universitätsbibliothek Bern



Scientific communication

- ❖ Tips to improve your scientific writing
- ❖ How to cite correctly
- ❖ Tips for responding to reviewers
- ❖ Powerful poster design
- ❖ How to use AI responsibly for academic writing (starting February 2025)

Scientific databases and literature search

- ❖ SciFinder-n: Useful for every scientist
- ❖ AI-tools for literature search
- ❖ Ways to find full texts quickly
- ❖ RefHunter: Database of databases
- ❖ How does a scientific video journal work? Introduction to JoVE

Systematic reviews: Evidence synthesis

- ❖ Literature review types from systematic to generic: An overview
- ❖ 12 steps for a successful systematic review
- ❖ Tips for successfully leading your team in a systematic review
- ❖ PRISMA for systematic review projects: Tips for researchers

Useful tools

- ❖ Introduction to BioRender: Not only for biologists
- ❖ Easy poster design with BioRender
- ❖ Publish or Perish: Useful software for efficient Google Scholar searches and exports
- ❖ SciFlow: Learn how to use this tool for easy writing and formatting
- ❖ LaTeX: Make it your own and personalize your LaTeX thesis with style and class



Open access

- ❖ CC what? Introduction to publishing in open access with CC licenses
- ❖ Financing open access publications at UniBE
- ❖ Opening peer review: Introduction to review commons
- ❖ Questionable practices in scholarly publishing (predatory and the like)

Research data management

- ❖ Reasons for and benefits of sharing your data openly
- ❖ How to publish your data in 5 easy steps
- ❖ Which data repository is the best for me?
- ❖ Basic ethics considerations in research data management
- ❖ How to handle and publish sensitive data
- ❖ Funding agencies strategies and requirements in ORD
- ❖ RedCap for clinical studies (in collaboration with DCR/CTU, starting February 2025)
- ❖ RedCap for non-clinical research (in collaboration with DCR/CTU, starting February 2025)

Library tour

- ❖ Want to know more about your library and its services? Please let us know. We are happy to take you on a quick tour through your library of choice.

Your topic of interest is not listed here? Write to us and we will work with you to develop a customized lecture that will go perfectly with your coffee.

For orders contact frnat.ub@unibe.ch or support_med.ub@unibe.ch